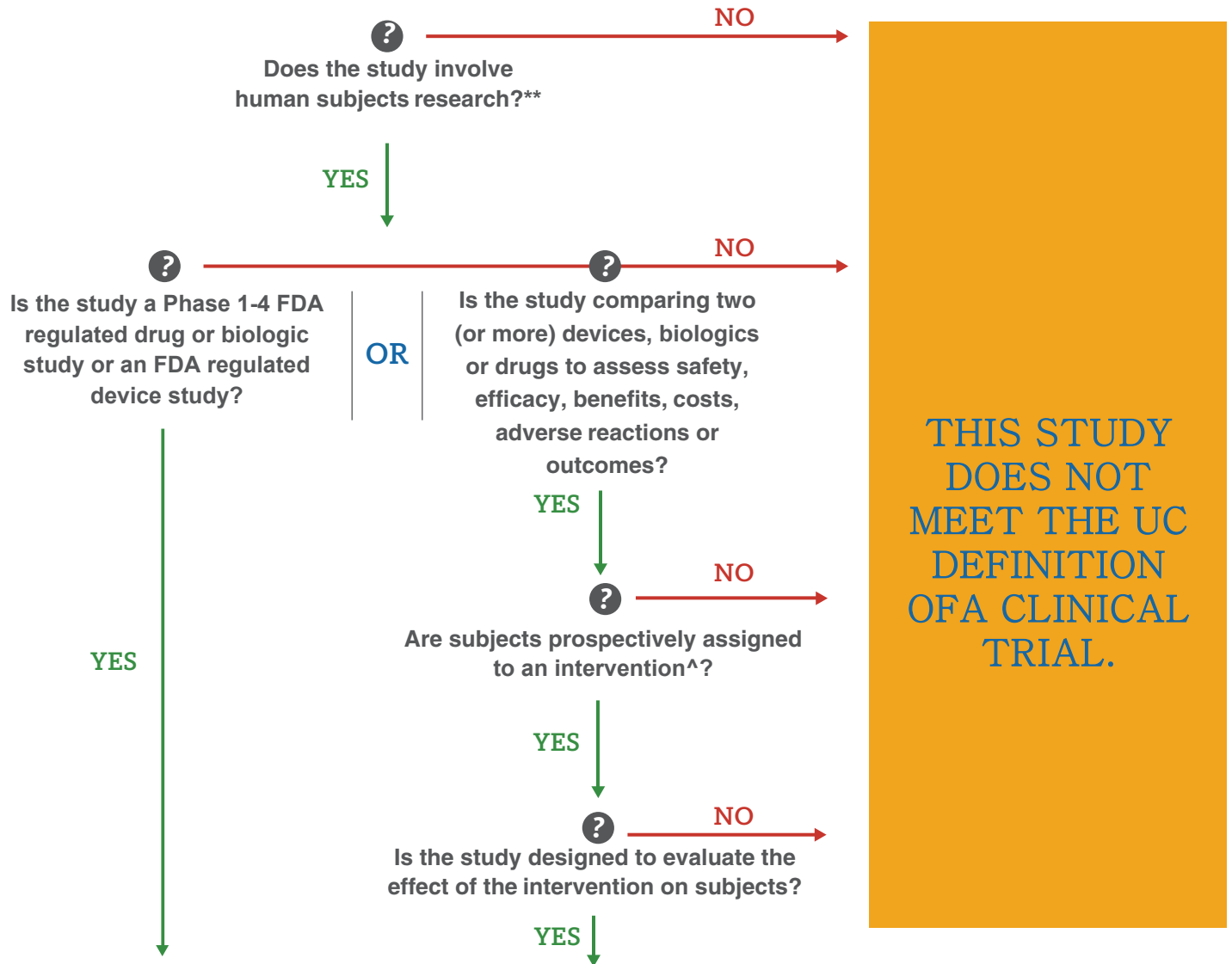


## DECISION TREE FOR UC CLINICAL TRIAL DEFINITION\*



THIS STUDY DOES NOT MEET THE UC DEFINITION OF A CLINICAL TRIAL.

THIS STUDY MEETS THE UC DEFINITION OF A CLINICAL TRIAL.

\*For the purpose of determining applicability of the UC clinical trial F&A rate and applicable contract terms.

\*\*See the IRB determination of human subjects research form at: <https://tinyurl.com/HSdetermination>.

^An intervention, in the context of the UC definition of a clinical trial, is the manipulation of a subject via the controlled testing of a drug, device, treatment or diagnostic under an approved protocol. A blood draw, on its own, may not be sufficient to constitute an intervention.

Please contact Heather Kubinec at [hkubinec@uci.edu](mailto:hkubinec@uci.edu) or Angie Karchmer at [angie.karchmer@uci.edu](mailto:angie.karchmer@uci.edu) if you have any questions.