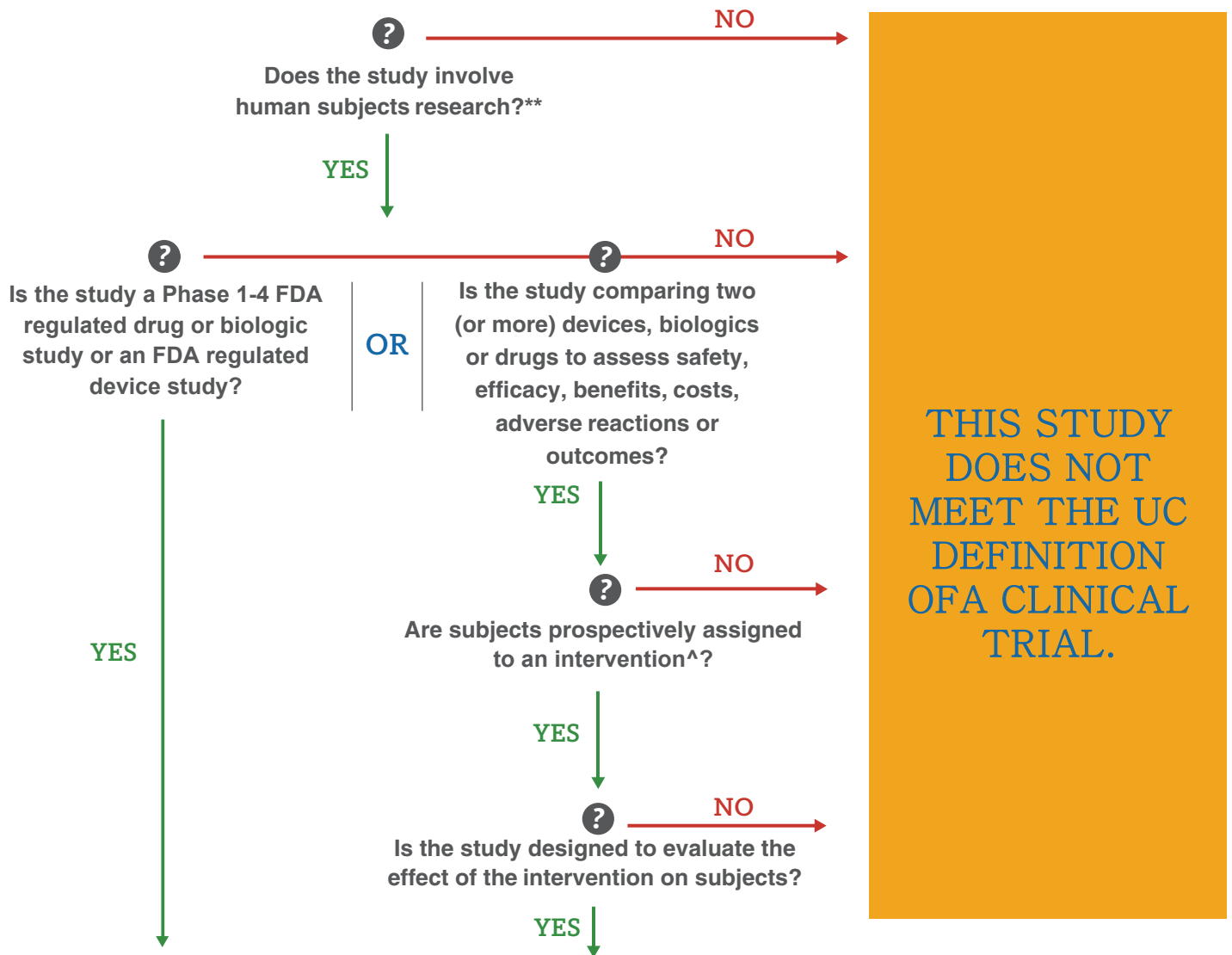


DECISION TREE FOR UC CLINICAL TRIAL DEFINITION*



THIS STUDY DOES NOT MEET THE UC DEFINITION OF A CLINICAL TRIAL.

THIS STUDY MEETS THE UC DEFINITION OF A CLINICAL TRIAL.

*For the purpose of determining applicability of the UC clinical trial F&A rate and applicable contract terms.

**See the IRB determination of human subjects research form at: <https://tinyurl.com/HSdetermination>.

^An intervention, in the context of the UC definition of a clinical trial, is the manipulation of a subject via the controlled testing of a drug, device, treatment or diagnostic under an approved protocol. A blood draw, on its own, may not be sufficient to constitute an intervention.

Please contact or-ctcontracts@uci.edu or Anne Demarie at ademarie@uci.edu if you have any questions.